

QuickPin extension for EPLAN Electric P8



Inhaltsverzeichnis

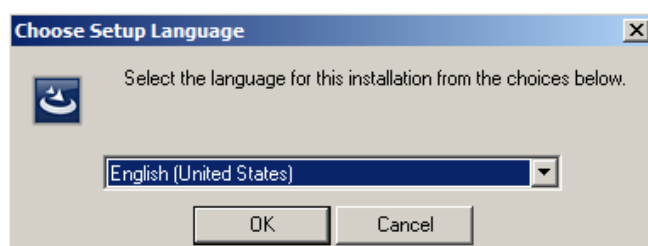
Getting started.....	3
Installation	3
Create new configuration	5
Cable configuration verification.....	7
Tasks.....	9
New configuration	9
Insert cable macro	9
Configuration from editor	10
Reconfiguration existing cable configuration	11
Verification cable macro.....	12
Synchronization of inserted cable macro	12
Remove igus® configuration information from Project	12
References.....	13
Menu	13
Toolbar	14
Graphics user interface	15

Getting started

This section of help provides information which helps you start work with the Quick Pin extension for the EPLAN Electric P8.

Installation

Package should contain file setup.exe. That file is a standard windows installer installation. You should run this file and on the beginning choose a GUI installation language. The installation support German and English languages. This settings doesn't have influence on Quick Pin extension GUI, this is only for installation graphics interface.



Next step you have to read and accept license term. In the next step you can choose destination location of installed files. The installation will check required minimal space for application (~15 MB) and inform you about limitations in process of installation.

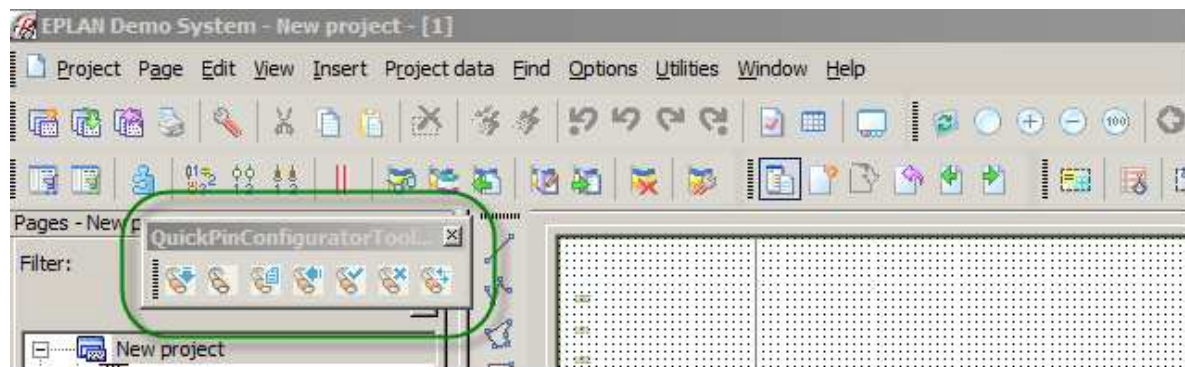


In the next dialog the installation is ready to install Quick Pin extension, you have to choose button **[Install]**. Next Windows installer shows the progress about installation process.





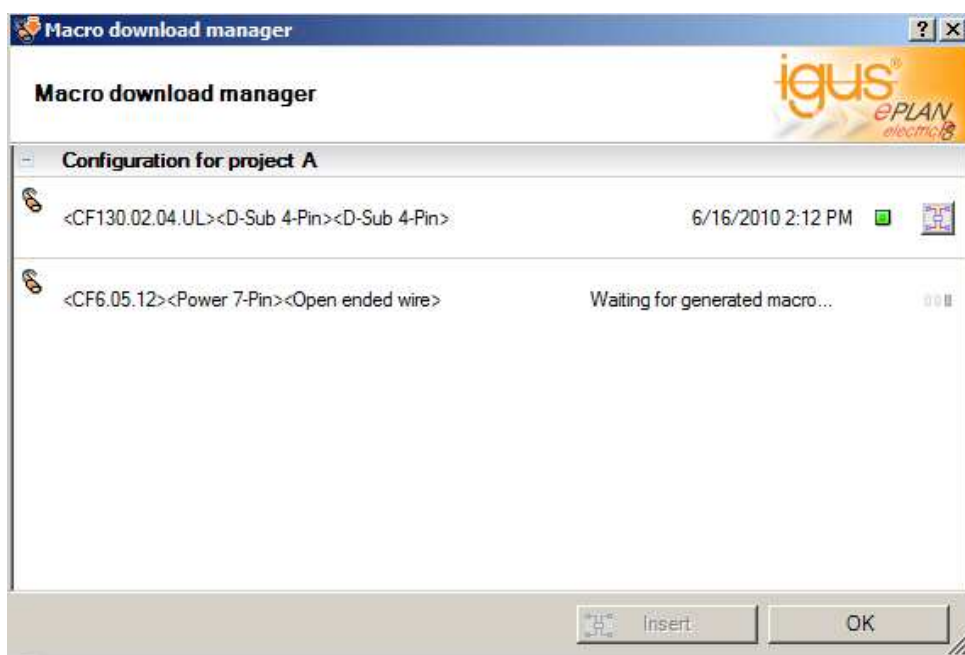
You can cancel installation in any step of installation process. The windows installer rollback all changes in a case of cancel installation process. The Windows Installer informs you about installation process result on the last dialog. Next step to work with Quick Pin extension is

open EPLAN Electric P8. The installation support EPLAN Electric P8 1.9.5-1.9.11 and EPLAN Electric P8 2.0.1-2.0.3. When you open EPLAN P8 in the toolbars should appear new group of toolbar from Quick Pin extension.





Create new configuration

You can quickly create new cable configuration which can be use in the EPLAN Electric P8. Please use the toolbar button  new configuration. The EPLAN Electric P8 opens the default browser application with special URL. In the browser should show standard Quick Pin application for create cable configuration. Please configure you configuration and make an order of configuration. After this operation you can open  macro download manger and in the list should be listed your configuration.



The download manager is waiting for generated macro and can inform you by sys try icon about downloaded macro. That solution doesn't stop you work on EPLAN Electric P8 and you can continue editing a project and download.




The status icon  informs if cable macro is still in the queue of generation server. The green icon informs that macro configuration is downloaded and ready to insert in EPLAN Electric P8 project. Action of insert macro to project is available in download manager; this is button  in the same row as the status icon. When you press **[Insert]** button, the download manager dialog is closed and you can place the macro in project.

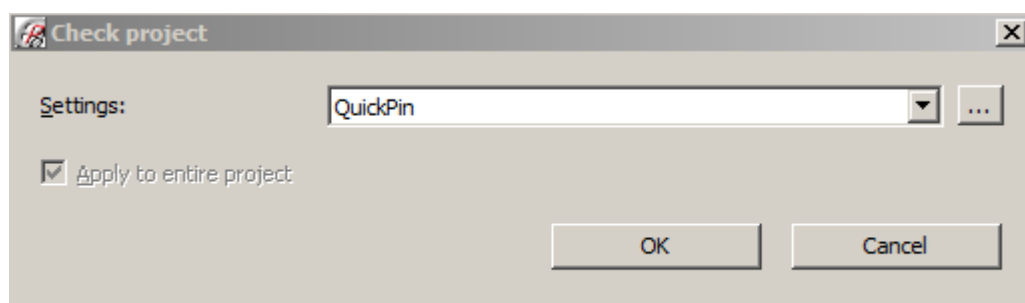


Important:

Only configurations created from EPLAN Electric P8 are recognized by the Quick Pin extension. Standard open of Quick Pin www application from the igus® site is not integrated with Quick Pin extension. Configuration created from EPLAN Electric P8 is secured and cannot be visible by other users of Quick Pin application.

Cable configuration verification




You can always check if you inserted cable macro in project is still consistent. The process of editing in EPLAN Electric P8 gives you possibility to remove important information from macro or change connections points of wires. In that all cases the validation function give you possibility to recheck your current state of inserted macros. Please choose button  validate cable configuration and EPLAN show the dialog to check project. The default selected schema for validation is "QuickPin" schema.



The validation checks the following information:

- Part information in cable
- Connected plugs to cable
- Connected devices to cable if synchronization function was done on cable.

Verification is done on whole opened project and result is show on the validation console on EPLAN Electric P8. The validation process checks only igus® Chainflex® cables. The other cables are skipped in process of validation. By the validation console you can navigate to cables which have some reported information.


Row	Status	Category	Number	Page	DT	Message text
1		E	999445	1	W2	Installed macro has not been synchronized yet
2		E	999444	1	W2	Cable internal connections are different from original configuration 'MAT9'
3		E	999444	1	X3	Cable plug pin number(s) is (are) different from original configuration 'MAT9'

The validation process is helpful tool to give information about current status of inserted macros. That information doesn't limit user to work with EPLAN projects and cable configuration.


Tasks

This part of document provides information about all available functions in the Quick Pin extension.

New configuration

You can create any new cable configuration directly from EPLAN Electric P8. The function is available on the toolbar as function  new configuration. The EPLAN Electric P8 is generating special URL which are opening in default system browser. In case of connection problem the EPLAN Electric P8 shows information about this with possibility to change the connection options. The Quick Pin web application is open with blank configuration which is ready to customize.


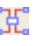
Insert cable macro

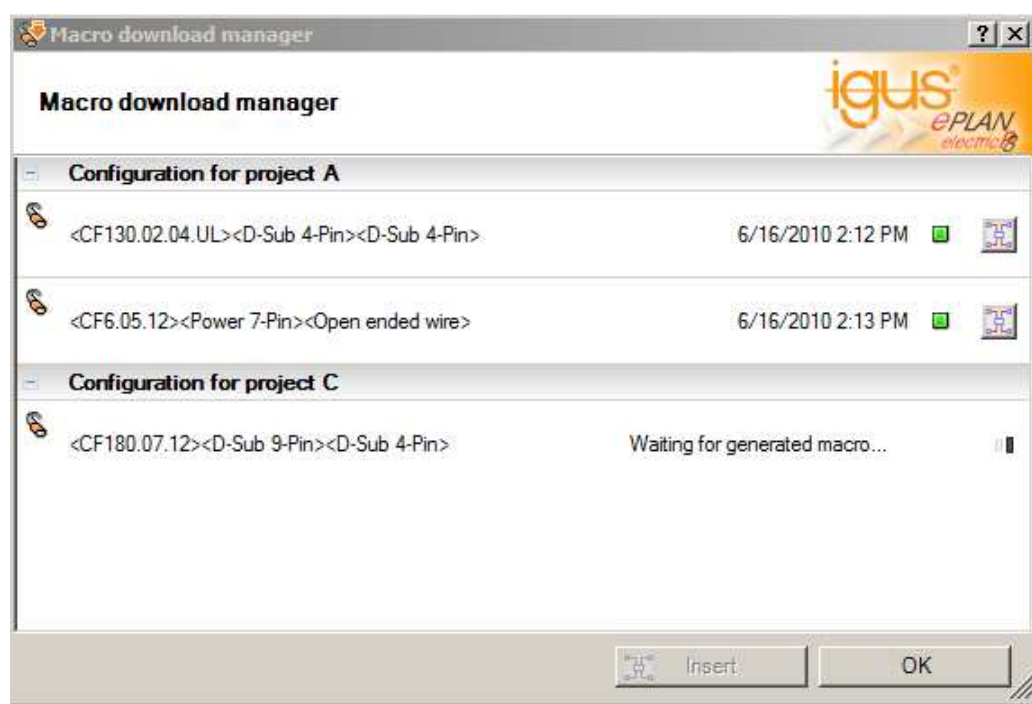
When you order new cable configuration in Quick Pin web application than the EPLAN Electric P8 start tracking the queue of generating macros on the server side. When a cable macro is generated and ready to download than  the macro download manager downloads the macro. The EPLAN Electric P8 informs you about new cable macro ready to use by sys try icon. In that case you can do some other work which is not connected with EPLAN Electric P8.




Important:

The download manager is working only in the time when the EPLAN Electric P8 is executed too. In the result you will not get information about new downloaded macros when EPLAN Electric P8 is closed on you system. Important is that any restart of EPLAN Electric P8 doesn't disturb work of download manager, the download manager asks server once again about macros which are in the queue after EPLAN Electric P8 restart.

From the download manager you can easily insert macro to interested page. You should first select interested project page on EPLAN Electric P8, next open  download manager. Download manager has cable configurations list with  button insert. Please click on that button and the EPLAN Electric P8 hides download manager dialog and shows the macro which is following with mouse cursor. By clicking on the page you are inserting selected cable macro to page.



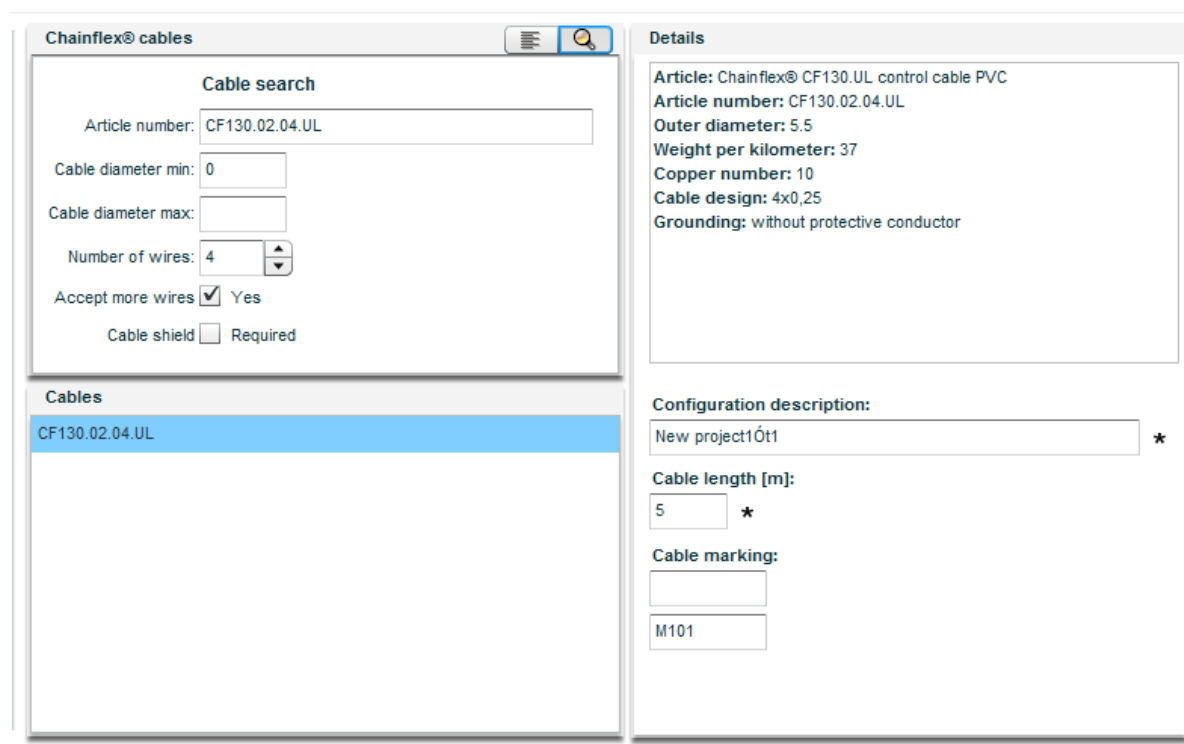
Configuration from editor

You can start creating configuration with basic information from EPLAN Electric P8. To do this you have to select interested device or cable on EPLAN Electric P8 and click on toolbar button  create configuration from editor. The EPLAN Electric P8 application passes the following information to browser if exists:

- Cable article (for igus® Chainflex® cables in already created configurations)
- Cable diameter
- Cable wire count

- Marking information
- Project description
- Cable is shielded.

This information's are inserted in the first page of Quick Pin web application.



The screenshot shows a web application interface for Chainflex® cables. It is divided into two main sections: 'Cable search' and 'Details'.

Cable search section:

- Article number:** CF130.02.04.UL
- Cable diameter min:** 0
- Cable diameter max:** (empty field)
- Number of wires:** 4 (with up/down arrows)
- Accept more wires:** ☒ Yes
- Cable shield:** ☐ Required

Cables list:

- CF130.02.04.UL (highlighted)

Details section:

- Article:** Chainflex® CF130.UL control cable PVC
- Article number:** CF130.02.04.UL
- Outer diameter:** 5.5
- Weight per kilometer:** 37
- Copper number:** 10
- Cable design:** 4x0,25
- Grounding:** without protective conductor

Configuration description:

- New project10t1 *


Cable length [m]:

- 5 *


Cable marking:

- M101



Reconfiguration existing cable configuration

You can check the detail of cable configuration directly from EPLAN Electric P8 project. To do this you should select inserted cable macro in project page and click on toolbar button  reconfigure cable configuration. When you select cable not from Quick Pin than the EPLAN Electric P8 will inform you about mistake. Additionally EPLAN validate selected macro. When validation process detects some inconsistency in selected macro than show warning information with possibility to continue or create new configuration from editor. In the result of reopen configuration the EPLAN Electric P8 open browser with Quick Pin web application which contain already created configuration.


Verification cable macro

In EPLAN Electric P8 you can check cable macros already used in opened documents. This function help you keep consistent generated macros in the process of editing EPLAN Electric P8 documents. Please click on the toolbar button  cable configuration verification. The EPLAN Electric P8 shows check project dialog which start process of project validation.

Synchronization of inserted cable macro

Any inserted cable macro you can synchronize with connected devices. This function helps you keep on track changes in cable connection during the process of editing EPLAN Electric P8 documents. To have synchronized already inserted cable macro with connected devices, please click on toolbar button  synchronization macros. This action can work on whole project or on the current selected cable. The EPLAN Electric P8 application inform about count of synchronized cable macros in project on the end of the operation. The process of synchronization always synchronizes all Quick Pin cable macros. This operation overwrites existing synchronized cables information. Operation of synchronization with selection is working only on selected cable. The existing information about connected devices are verified during process of  verification cable macros.

Remove igus® configuration information from Project

The cable macro contain specific information which are use to reconfigure macros. This information is store with macros in the EPLAN Electric P8 projects. You can avoid copying this information when you would like to send project document to another user. Please click on the toolbar button  clean up cable. The EPLAN Electric P8 asks you if you really want to do this and propose backup of project before that operation. Backup avoid situation that you completely remove information from cable configuration.








References

That parts of help list all available toolbars, menus and GUI with short description.

Menu








The Quick Pin extension functions are available from the EPLAN Electric P8 menu. All menu points are located in subgroup menu **Quick Pin**. The Quick Pin subgroup is located in **Menu > Utilities > QuickPin**.

The following list of menu points is available:

- **Macro download manager** – action  to open dialog for downloaded cable macro configurations.
- **Create new Quick Pin configuration** – action  to create new cable configuration.
- **Create new Quick Pin configuration from editor** – action  to create new cable configuration with basic information from EPLAN Electric P8.
- **Reconfigure cable** – action  to open selected Quick Pin cable in web application.
- **Verify cable** – action  to execute check project process with Quick Pin schema.
- **Clean up cable** – action  to remove internal information about configuration from inserted macros in project.
- **Synchronize devices for igus® Chainflex® cables** – action  to execute process of synchronization information in Quick Pin cables.
- **Options** – action to open dialog with options.

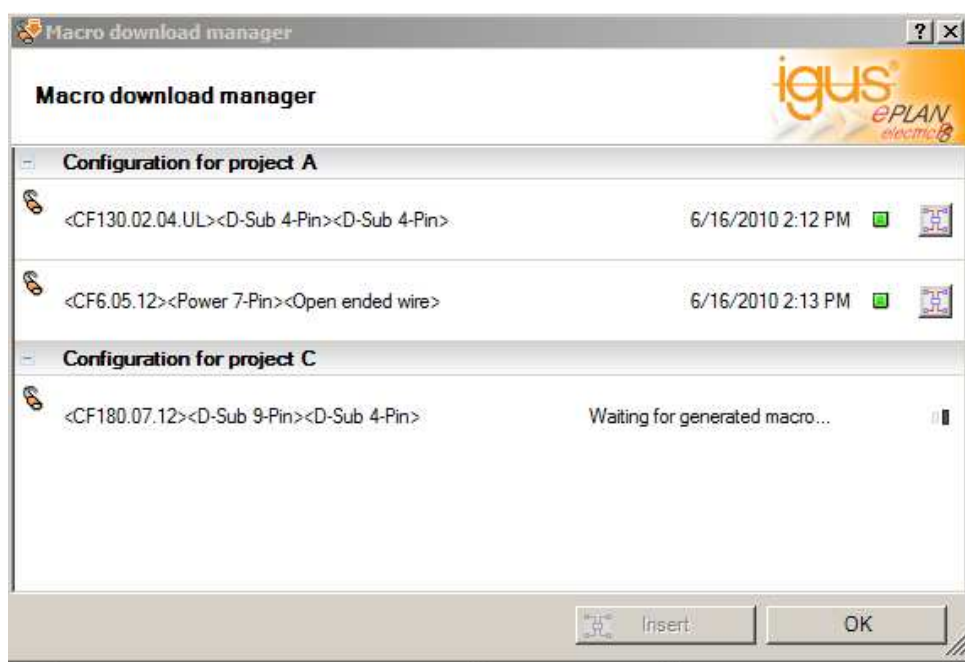
Toolbar


Most of action you have available on the **QuickPinConfigurationToolbar** group. Toolbars with icons helps you to faster work with application. The following table lists all actions with short description.

Icon	Action name
	Macro download manager
	Create new Quick Pin configuration
	Create new Quick Pin configuration from editor
	Reconfigure cable
	Verify cable
	Clean up cable
	Synchronize devices for igus® Chainflex® cables

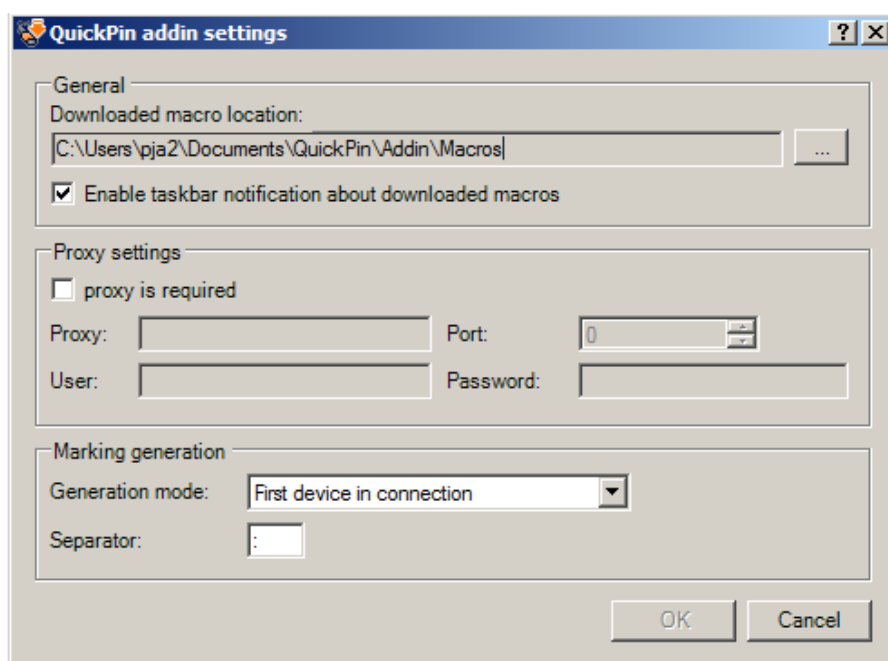
Graphics user interface

Macro download manager dialog interface:



The **Macro download manager** dialog informs you about the current list of created cable configurations and the status for these configurations. The list of cable configurations are grouped by configuration description. When you are using the same description for two different cables configuration (e.g. Configuration for project A), then the download manager is grouping two configurations. From download manager you can insert downloaded macro directly to EPLAN Electric P8 by icon 

Settings dialog interface:



The **Settings** dialog contains the following list of options:

- **Download macro location** – you can define your own location of downloaded macros. The already downloaded macros stay in old location when you will change the path. The application remembers old location for already downloaded cable macros.
- **Enable taskbar notification about downloaded macro** – you can define if you would like to be informed about new downloaded macro.
- **Proxy settings** – When you are working in the network with authorized proxy, than you have to enable option **proxy is required** and input required information. When you are working in domain and proxy required users from domain than you have to add domain name before user name (e.g. domain_name\user_name).
- **Marking generation** – This option helps you to define how marking are defined by EPLAN Electric P8. You can choose generation mode: first device in connection or all devices in connection. Additionally for second generation mode you can define how to separate names of connected devices.