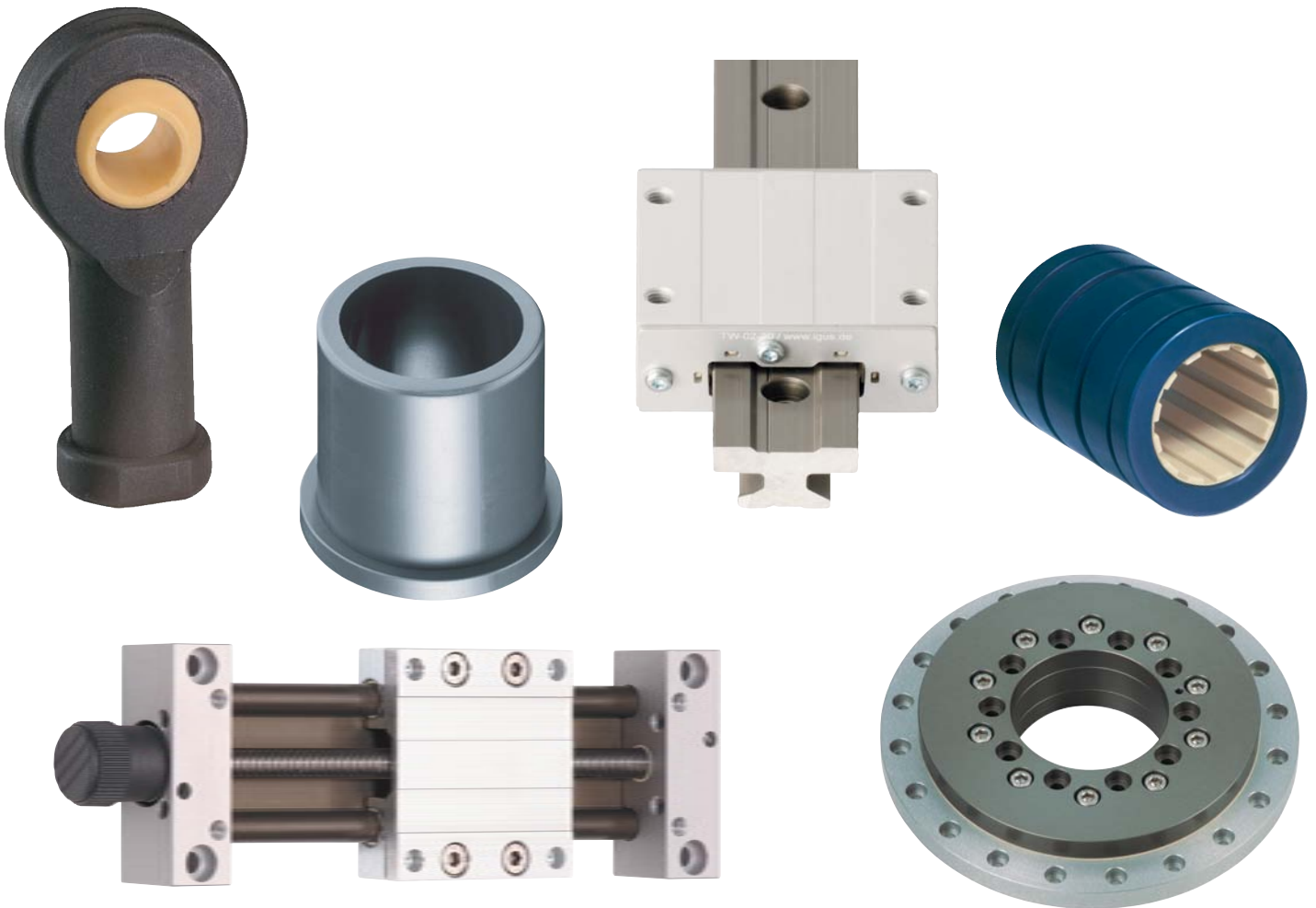


Packaging

Plastic Bearings for the Packaging Industry



Packaging with iglide®



Sleeve, Flange and Thrust Washer Bearings



Linear Guide Systems



Self-Aligning Bearings



FILLING

- Carousel fillers
- Lifting elements
- Filling valves

Advantages

- Resistant to chemicals including typical cleaning agents (PES)
- Low moisture absorption
- Extremely high wear resistance, high cycle counts and compatibility with soft, stainless steel shafts for reduced cost and better corrosion resistance.
- High temperature materials available (up to 500°F)



INSPECTION

- Level and volume inspection
- Format adjustment
- Camera adjustment

Advantages

- Resistant to common cleaning agents
- Resistant to corrosion
- No scoring of stainless steel shafts, less shaft replacement costs
- Cost reduction
- Low-cost positioning systems from stock

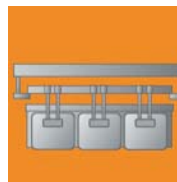


BLOW MOLDING

- Tool mold bearings
- Pre-form guides
- Conveyor

Advantages

- Maintenance-free and dry running; no need for lubrication
 - will not contaminate blanks
- Low weight - low inertia of moving masses
- Compact installation
- Extremely high wear resistance



PALLETIZING

- Gripper systems
- Format adjustment
- Bottle packing

Advantages

- Low weight - low moving masses
- High wear resistance
- Zero maintenance
- Vibration dampening
- Corrosion resistance
- Consistent frictional properties

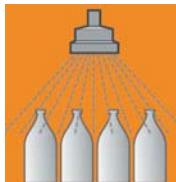


LABELING

- Camera adjustment
- Magazine adjustment
- Label cutter

Advantages

- Maintenance-free
- No oil to contaminate product
- Extremely high cycle counts possible
- High wear resistance despite paper dust



CLEANING

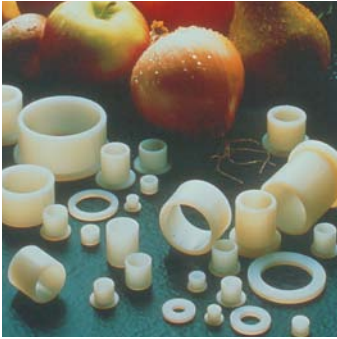
- Cleaning chains
- Rinsing systems
- Gripper systems

Advantages

- Maximum resistance to chemicals including typical cleaning agents (PES, suds)
- Minimum friction
- Negligible moisture absorption
- Low drive power required

iglide® Plain Bearings

iglide® bearings are available in flange, sleeve and thrust washer design. Over 6,000 sizes available from stock. Custom designed parts are also possible.



iglide® A200

For applications requiring FDA approved material



iglide® G300

Thin walled bearing for those more demanding applications



iglide® L280

Low coefficient of friction with extremely high wear resistance



iglide® R

A low cost bronze replacement eliminating wet lubrication



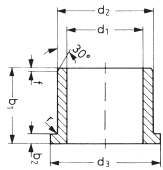
iglide® J

Lowest coefficient of friction and excellent for linear motion

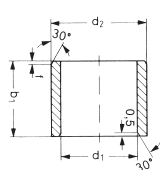


iglide® T500

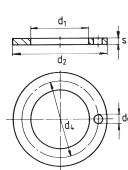
High temperature material with excellent chemical resistance



Flange



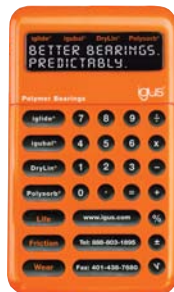
Sleeve



Thrust Washer

iglide® Benefits:

- Reduced equipment downtime
- Reduced maintenance costs
- Eliminate grease and grease lines
- Excellent for wash downs
- FDA & RoHS compliant materials
- Corrosion-free
- Chemical resistance



iglide® Application Success Story

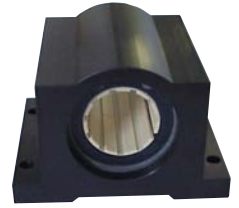
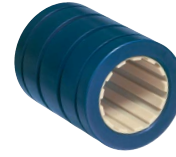


iglide® J bearings replaced lubricated ball bearings in this beverage industry machinery for enormous cost savings and an increase in service life. Additional advantages for the customer included corrosion resistance and maintenance-free operation.



iglide® Bearings

DryLin® R Linear Plain Bearings



JUI/JUM Liners

Eliminate cost, weight, and messy maintenance by using igus® DryLin® liners. The grooved liners are engineered for long life with oil-free operation. They are also available in our high-temp (482°F), chemical-resistant T500 material suitable for wash-down applications.

RJI/RJM Parts

These low-cost, low-weight all-polymer parts are dimensionally interchangeable with other linear bearings, but offer technical advantages to the packaging industry - such as low moisture absorption and no maintenance.

RJUI/RJUM Parts

Our most popular line: These parts, with easily replaceable liners, eliminate costs and messy maintenance found in other bearing technologies - as well as being dimensionally interchangeable.

Pillow Blocks

A wide selection of both imperial and metric pillow blocks are available, and are dimensionally interchangeable with other bearing technologies. Bearing liners are still fully replaceable, unlike other linear plain bearings.

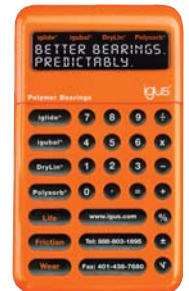


Unique split bearing also available.

S
DryLin® R
DryLin®

DryLin® R Benefits:

- Clean, oil-free operation will not contaminate product
- Eliminate messy grease lines and maintenance costs
- Easier on shafting than ball bearings
- Dimensionally interchangeable with other linear bearings
- Excellent for wash-down applications
- Great for short strokes and high accelerations for increased cycles
- High temperature liners for up to 482°F continuous operation
- Lifetime calculator for predictable, long life
- Replaceable liners unlike other plain bearings



DryLin® R Application Success Story



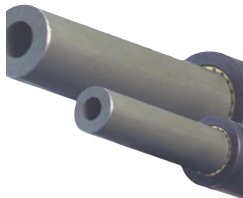
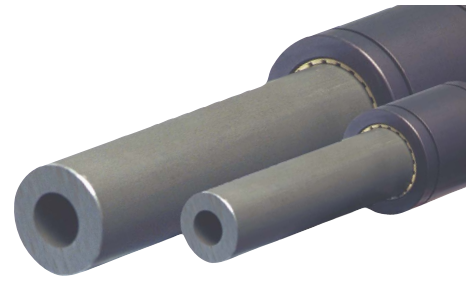
The continuous operating temperature in the welding arms on this tubular bag machine frequently reach 320°F and higher. These requirements are fulfilled by our high temperature material which also offers a particularly high resistance to wear.

DryLin® S Aluminum Shafting

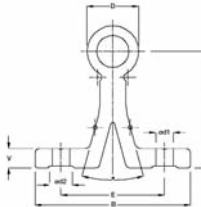


DryLin® S: Hard-Anodized Aluminum Shafting

DryLin® S anodized-aluminum shafting was specifically developed as the optimal sliding surface for DryLin® R and the iglide J material. This combination achieves the lowest frictional properties, and reduces wear by up to 50% versus steel shafting - not to mention being lightweight and extremely cost effective.



Precision Shafting
AWUI Inch sizes
available between 1/4" and 2" OD.
AWUM metric sizes
available between 6 mm and 50 mm.



New inch sized fully-supported shafting. Currently available in 1/2", 3/4", 1" and 1.25". Dimensionally interchangeable with other linear shaft systems. Metric sizes from 12 mm to 40 mm also available.

DryLin® S Benefits:

- Significantly increases bearing lifetime
- Lightweight
- Easy to machine
- Highly corrosion-resistant
- Clean and oil-free
- Available in inch and metric sizes
- Non-magnetic
- Lower cost than steel

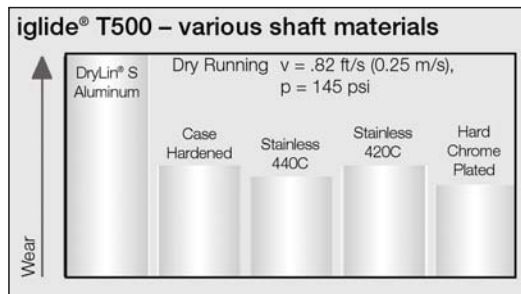
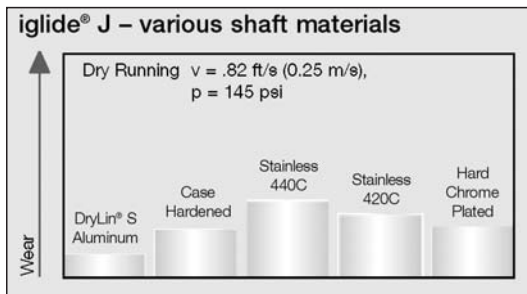


DryLin® S Shafting

Steel, Stainless Steel and Chrome Plated



igus® also offers precision steel, stainless steel and chrome plated shafting in both unsupported and fully supported configurations.



DryLin® R



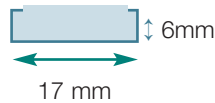
DryLin® N Low Profile Systems

The DryLin® N series offers extremely low profiles in several widths, and is therefore ideal in tight space constraints. Like all DryLin® products the carriages are designed to glide smoothly on anodized aluminum rails without the need for messy lubricants. They are also available in preloaded versions for reduced running clearance. DryLin® N is a particularly low-cost alternative to miniature ball bearing systems, and is more precise and economical when compared to many custom-machined or simple plastic parts.

DryLin® N



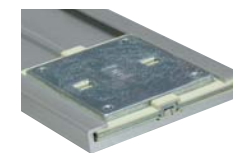
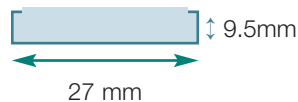
N17



N40



N27



N80



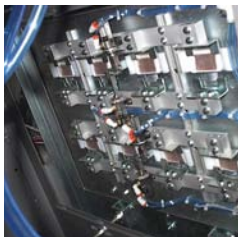
Drawings shown are not actual size

DryLin® N Benefits:

- Lightweight for decreased inertia
- Oil-free — will not contaminate product
- High speeds for increased machine throughput
- Replaceable liners
- Low cost
- Low moisture absorption
- Completely maintenance-free for reduced machine down time



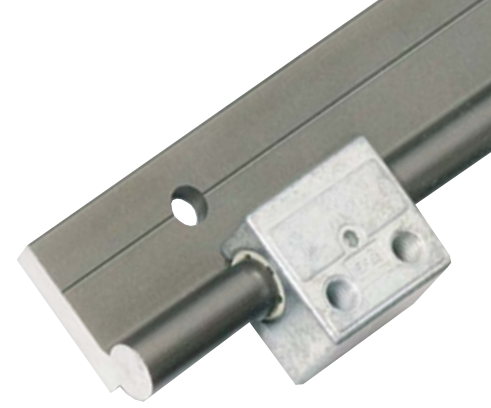
DryLin® N Application Success Story



This leading design firm has used DryLin® on projects ranging from meat processing equipment, custom packing, and pharmaceutical machinery. Due to its sanitation features for use around food, and its drug-friendly materials, they find igus® products ideal for many applications - such as DryLin® N on this product feeder.

DryLin® W Flexible Guide Systems

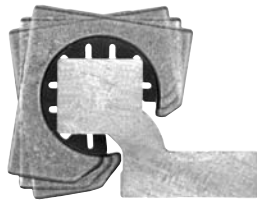
DryLin® W was developed to promote design flexibility and quick assembly, and is available in both single and double rail configurations. For rapid assembly DryLin® W is also offered as a pre-mounted, bolt-on system - eliminating the need for shaft alignment and carriage assembly. All DryLin® W systems are available with our enhanced J200 liners, which reduce friction and optimize bearing life. Anodized aluminum carriages are also available for chemical resistance, high shock loads, and other technical reasons.



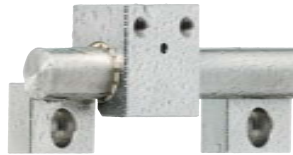
DryLin® W Single Rail



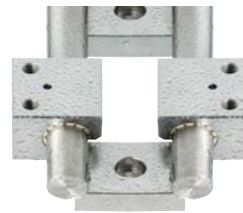
DryLin® W Double Rail



DryLin® W Square Rail



DryLin® W Stainless Steel



DryLin® W Double Stainless Steel

DryLin® W

DryLin® W Benefits:

- Design flexibility
- Reduced assembly time with no need to align the rails
- Cost effective
- Very low moisture absorption
- Corrosion-resistant
- Clean operation
- Extremely low friction
- Oil-free — will not contaminate product
- Suitable for use in dirt and dust



DryLin® W Application Success Story



DryLin® W was able to provide a compact design, low weight, and competitive cost solution for this manufacturer of case packing and palletizing machinery.

DryLin® T

DryLin® T Profile Guides

DryLin® T is ideal for highly corrosive environments and is dimensionally interchangeable with many re-circulating ball guides, but without the high cost and messy maintenance.



Adjustable Series TKO1

This series uses anodized aluminum carriages, stainless steel fasteners, and high-performance plastic glide strips. It also offers the unique capability of fully adjustable clearance.



Clamping Series TKC1

This series features a unique hand clamp, ideal for many positioning applications.



Miniature Series TK04

This series is a miniature non-adjustable version designed for use in tight design constraints. It is particularly cost effective and dimensionally interchangeable with many ball bearing guides.



DryLin® T02-HT
High Temperature
392°F (200°C)



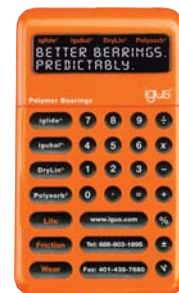
DryLin® TW-03-25
Compact Version



DryLin® TW-02
Heavy Duty
All-Metal Housing

DryLin® T Benefits:

- Non-corrosive - will withstand high pressure wash downs
- Lightweight design for reduced inertia
- Capable of extreme speeds of 50fps for increased throughput
- High accelerations with no shaft damage - can increase your machine's cycle count
- Completely oil-free - will not contaminate product



DryLin® T Application Success



DryLin® T has helped to increase throughput and reduce maintenance costs by over 90% on this stock feeding device. By replacing a ball slide with a DryLin® T linear guide the speed has been increased over the original design specifications, boasting shorter times and faster material flow. Long service life is assured with more than 500,000 on the system with no wear. No lubrication is required and it is completely resistant to dirt and dust.

DryLin® Linear Slide Tables



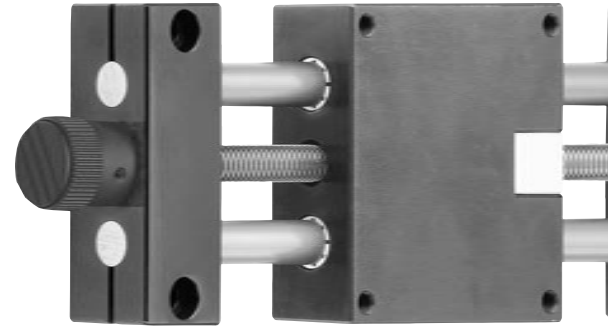
SLW
Based on our innovative DryLin® W double rail system, the SLW offers a fully supported rail with resistance to twisting and deflection.



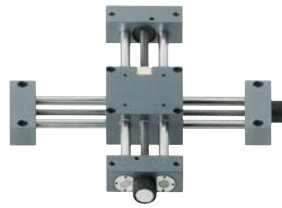
HTS/HTSC
Tough, clean, and adaptable-HTS is the most flexible system, and is available with several shaft and screw combinations for wash-downs.



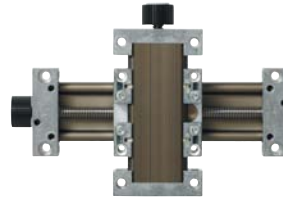
HTSP
HTSP is the most cost effective and light-weight unit available for handling low weight applications, especially in corrosive environments.



ZLW
For higher speed applications the ZLW belt-drive system offers clean and quiet high-performance.



HTS - XY Table
Flexible, lubrication-free and ready to use

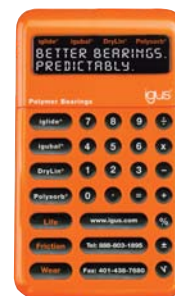


SLW-1040-XY
Cost saving XY Table solution

Slide Tables

DryLin® Slide Table Benefits:

- Reduce assembly time
- Clean, oil-free operation
- Maintenance-free operation to maximize throughput
- Based on proven igus bearing technology
- One part number, reduce your bill-of-materials



DryLin® Slide Table Application Success Story



A DryLin® linear slide table is used for height adjustments on this coding device, without maintenance or messy lubrication. DryLin slide tables are ideal for many applications within the packaging industry.

iglide® PRT



iglide® PRT Slewing-Ring Bearing

iglide® PRT is a slewing ring bearing with the proven advantage of igus® plastic bearings. The iglide® J sliding elements are completely maintenance-free and lubrication-free. All the housing components are made of aluminum, and all the parallel surfaces of iglide® J sliding elements are hard anodized. All the fixing screws are made of stainless steel.

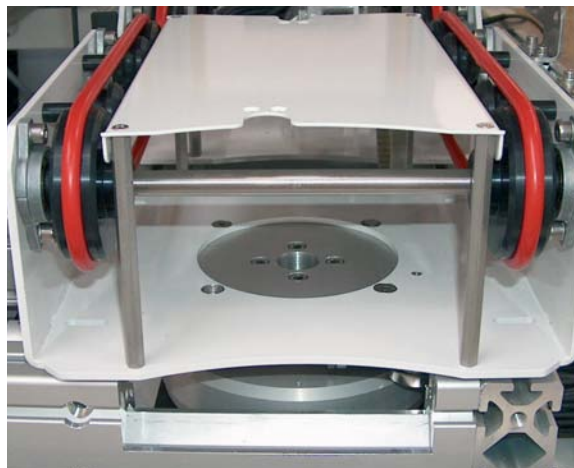


iglide® J Sliding Elements

iglide® J Sliding Elements

PRT Slewing Ring Benefits:

- Available in 6 sizes
- Clean, oil-free operation, will not contaminate product
- Bolt-on assembly
- High rigidity
- Excellent wear resistance
- Lightweight
- Quiet operation



APPLICATIONS:

- Assembly lines
- Production facilities
- Robots

igubal® Spherical Bearings

igubal® bearings are maintenance-free easy to install, self-adjusting, adapt to all angular deviations, and replace special housings in many cases. With igubal®, the user can take advantage of all of the benefits of high-performance plastics.



Rod End
Available with right or left hand threads



Pillow Block
Able to compensate for alignment errors and prevent edge loading



Twin Pivoting Bearing
Available in standard and custom lengths



2 bolt and 4 bolt flange
Inner ball available in either iglide®J or R material, depending on your application



Clevis Joints
Available in either a pin or clip spring design



Clip Bearings
Clip bearing to compensate for housing bore tolerances and base of assembly

igubal® Benefits:

- Vibration dampening
- Ability to operate in liquids or chemicals
- Resistant to dirt and dust
- Maintenance-free
- Self-adjusting



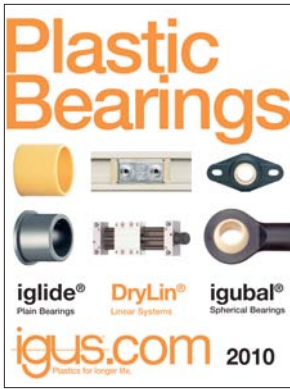
igubal® Application Success Story



Long service life and food safe design have been achieved in this application. Both high frequency and low frequency actuation cycles are possible with igubal® rod end bearings



igubal® Spherical Bearings



The iglide® catalog showcases more than 12 standard polymer material blends (additional blends available for custom orders). These engineered plastics are used throughout the plain, spherical and linear bearing product lines, as well as in the gliding elements of all DryLin® linear guide systems. All iglide® bearings and materials are self-lubricating and maintenance-free. More than 8,000 sizes and styles are available from stock.



The Energy Chain Systems® catalog provides comprehensive technical data and design information about hundreds of cable carriers and cable products. The new catalog has been revamped for ease of use and simplicity to quickly locate what you need. All products are backed by a complete system warranty. Various on-site services and harnessing solutions are available.



The new DryLin® linear slide table brochure provides customers with a complete range of slide table options for their packaging, medical and cleanroom applications. Six varieties are available in multiple sizes to meet a range of application requirements. Customizable solutions also are available.



The Y.E.S. (Young Engineers Support) Program offers free product donations to students and educators for use in design competitions, school projects and engineering curriculums. Through Y.E.S., igus fosters the mechanical design aspirations of young engineers and educates them about the merits and benefits of plastic components. Igus is a product supplier for competitions such as FIRST® Robotics, BEST™ Robotics and the SAE Collegiate Design Series. To learn more or to become a member of the Y.E.S. Program, visit www.igus.com/yesprogram.

www.igus.com • 1-888-803-1895
e-mail: sales@igus.com