

e-chain system® E2 Micro Assembly Instructions



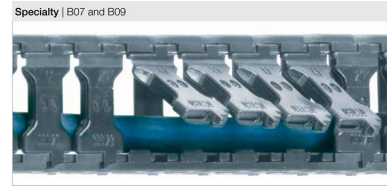
Twist and click



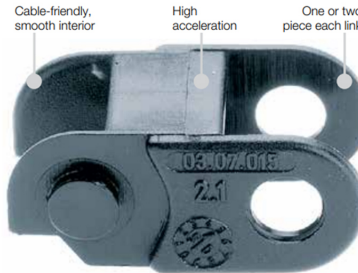
Twist and separate



Quat® Micro e-chain® - for smallest bending radii with Chamflex® CF98 and CF99 - 4 x d1



B07 and B09 - two-piece - Snap-open along outer radius with film-hinge

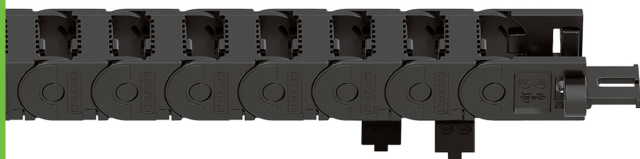


- One-piece e-chains®, from inner height of .20 (5 mm)
- High torsional rigidity
- Smallest inner heights and bending radii
- Mounting brackets with optional strain relief
- Small pitch for smooth running
- Cable-friendly, smooth interior
- Low weight
- Large pins for longer life
- Space-saving ratio of inner-to-outer dimensions
- To find more technical data about the material, chemical resistance and temperatures ➤ Design, Chapter 1



E2 Micro - one-piece e-chains® One-piece, non snap-open

Series	Inner height <i>hi</i>		Inner width <i>Bi</i>		Outer width <i>Ba</i>		Outer height <i>ha</i>		Bending radius <i>R</i>	
	in.	(mm)	in.	(mm)	in.	(mm)	in.	(mm)	in.	(mm)
03	.20	(5)	.20-.39	(5-10)	.34-.54	(8.7-13.7)	.31	(8)	.39-1.10	(10-28)
04	.28	(7)	.28-1.18	(7-30)	.47-1.38	(12-35)	.39	(10)	.59-1.89	(15-48)
05	.39	(10)	.24-2.52	(6-64)	.39-2.68	(10-68)	.47	(12)	.71-1.50	(18-38)
045	.41	(10.3)	.24-2.52	(6-64)	.47-2.76	(12-70)	.49	(12.5)	.71-1.50	(18-38)
06 ¹⁾	.41	(10.5)	.24-2.52	(6-64)	.49-2.80	(12.5-71)	.59	(15)	.71-1.50	(18-38)
E2C-10	.42	(10.6)	.24-1.97	(6-50)	.53-2.26	(13.4-57.4)	.59	(15)	.71-1.50	(18-38)
E2C-15	.59	(14.9)	.39-1.97	(10-50)	.70-2.28	(17.8-57.8)	.76	(19.3)	1.10-2.95	(28-75)
08 ²⁾	.59	(15)	.39-1.97	(10-50)	.72-2.29	(18.2-58.2)	.76	(19.3)	.98-1.89	(25-48)



E2 Micro - two-piece e-chains® Snap-open along the inner radius

Series	Inner height <i>hi</i>		Inner width <i>Bi</i>		Outer width <i>Ba</i>		Outer height <i>ha</i>		Bending radius <i>R</i>	
	in.	(mm)	in.	(mm)	in.	(mm)	in.	(mm)	in.	(mm)
E2i-10	.41	(10.3)	.63-1.57	(16-40)	.89-1.85	(22.5-47.0)	.59	(15)	.71-1.50	(18-38)
E2i-15	.56	(14.3)	.63-1.57	(16-40)	.95-1.90	(24.2-48.2)	.76	(19.3)	1.10-1.89	(28-48)



E2 Micro - two-piece e-chains® Snap-open along the outer radius

Series	Inner height <i>hi</i>		Inner width <i>Bi</i>		Outer width <i>Ba</i>		Outer height <i>ha</i>		Bending radius <i>R</i>	
	in.	(mm)	in.	(mm)	in.	(mm)	in.	(mm)	in.	(mm)
E2-10	.40	(10.1)	.24-1.97	(6-50)	.53-2.26	(13.4-57.4)	.59	(15)	.71-1.50	(18-38)
B07 ³⁾	.41	(10.3)	.63-1.57	(16-40)	.89-1.85	(22.5-47.0)	.59	(15)	.71-1.50	(18-38)
B09 ⁴⁾	.56	(14.3)	.63-1.57	(16-40)	.95-1.90	(24.2-48.2)	.76	(19.3)	1.10-1.89	(28-48)
E2-15	.57	(14.4)	.39-1.97	(10-50)	.70-2.28	(17.8-57.8)	.76	(19.3)	1.10-2.95	(28-75)

For new designs we recommend E2 micro new generation series 1) E2C-10, 2) E2C-15, 3) E2-10, 4) E2-15