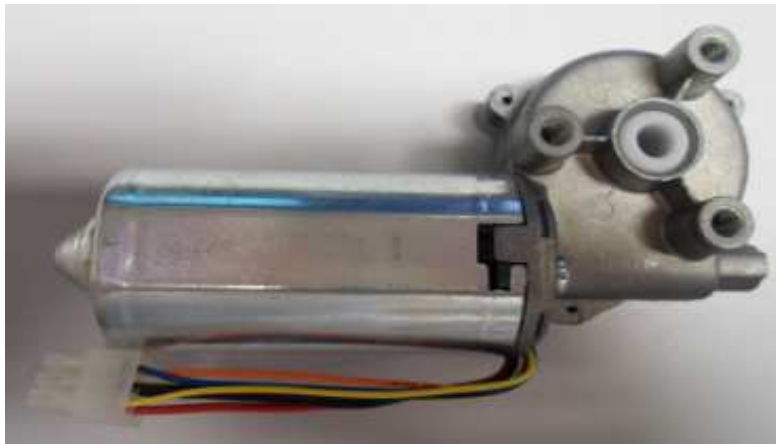


DC motors



- DC motor with worm gear
- spindle or shaft assembly by serration
- 2 channel Hall sensor for positioning
- motor connection by Molex plug

DC motor with worm gear



part number

MOT - DC - 42 - J - H - D

specifics (nominal speed[1/min])	
B	60
D	125
F	230
H	400
optionen	
H	Hall
motor connection	
J	plastic plug
outer diameter	
42	42 mm
motor typ	
DC	DC-motor
product group	
MOT	motor

DC motor with worm gear



technical data									
		MOT-DC-42-J-H-B	MOT-DC-42-J-H-D	MOT-DC-42-J-H-F	MOT-DC-42-J-H-H				
motor									
nominal voltage	[VDC]	24	24	24	24				
nominal torque	[Nm]	2,00	1,75	1,25	0,75				
nominal speed	[1/min]	50	100	200	350				
nominal current	[A]	1,5	2,8	1,9	1,9				
no-load speed	[1/min]	60	125	230	400				
no-load current	[A]	0,45	1,35	0,45	0,70				
starting torque	[Nm]	10,0	8,0	7,5	5,0				
starting current	[A]	5,0	10,0	9,0	10,0				
max. shaft load axial	[N]	0	0	0	0				
max. shaft load radial	[N]	0	0	0	0				
gear ratio		62:1	62:1	59:3	56:4				

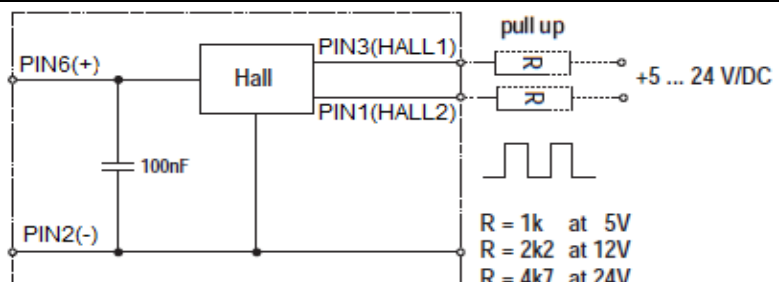
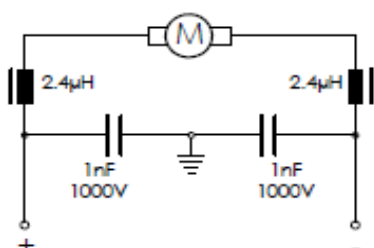
Hall sensor		
operating voltage	[VDC]	5-24V
impulse / turn (motor shaft)		5
zero impulse / index		no

weight									
motor weight	[kg]	0,700	0,700	0,700	0,700				

operating data									
ambient temperature	[°C]	-10 ... +50							
max temperature rise	[°C]	70							
humidity (not condensing)	[%]	85							
protection class		IP20	IP20	IP20	IP20				
operation mode		S2 (short-time duty)							

plug connection				
plug: Molex serie 5556				
signal	PIN	color	wire typ	
Hall chanal 2	1	yellow	26 AWG 0,128mm ²	
Hall minus	2	black	26 AWG 0,128mm ²	
Hall chanal 1	3	blue	26 AWG 0,128mm ²	
motor +	4	red	20 AWG 0,519mm ²	
motor -	5	black	20 AWG 0,519mm ²	
Hall plus (5-24VDC)	6	orange	26 AWG 0,128mm ²	

suppressor Hall sensor in motor PullUp supplied by customer

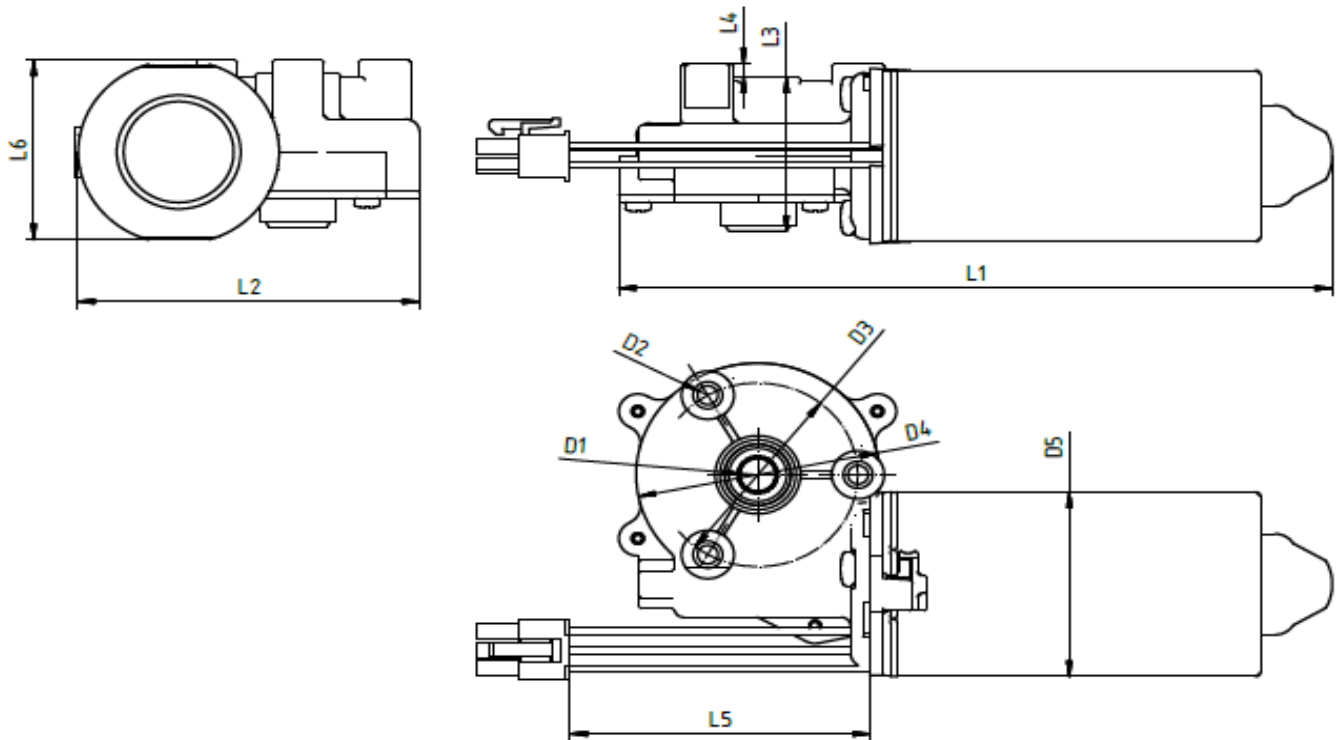


torque-, current- & roation speed datas are valid at cold motor. The tolerance of these values is 10%.

DC motor with worm gear



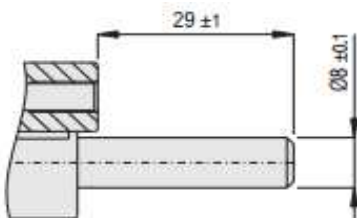
technical data dimension



typ	D1 [mm]	D2 [mm]	D3 [mm]	D4 [mm]	D5 [mm]	L1 [mm]	L2 [mm]	L3 [mm]	L4 [mm]	L5 [mm]	L6 [mm]
MOT-DC-42-J-H-B	7x8 DIN5481	M5	42 (3x120°)	51	42	150	72	35	3	75	41
MOT-DC-42-J-H-D	7x8 DIN5481	M5	42 (3x120°)	51	42	150	72	35	3	75	41
MOT-DC-42-J-H-F	7x8 DIN5481	M5	42 (3x120°)	51	42	150	72	35	3	75	41
MOT-DC-42-J-H-H	7x8 DIN5481	M5	42 (3x120°)	51	42	150	72	35	3	75	41

motor shaft

part number	description	parts per motor
NOR-22300	plug-in motor shaft (DIN 5481 7x8)	1
NOR-20507	lock ring	2



cables

cable Ø: 7,5 mm / bending radius moved < 10 m travel distance: min. 7,5 x d

part number	outer jacket	type	cable length [m]	connector
MAT904101539-3 (unshielded)	PVC	CF130	3	straight

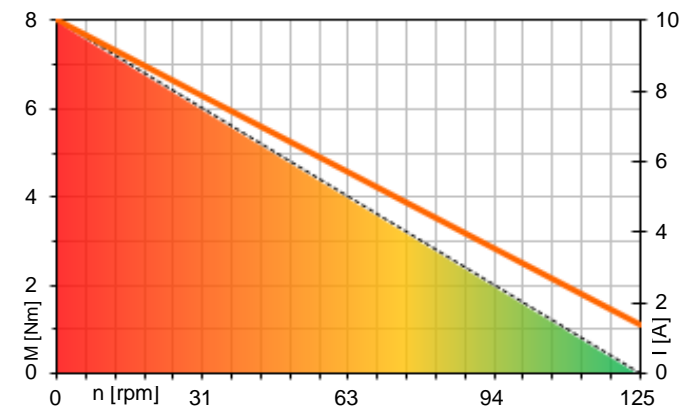
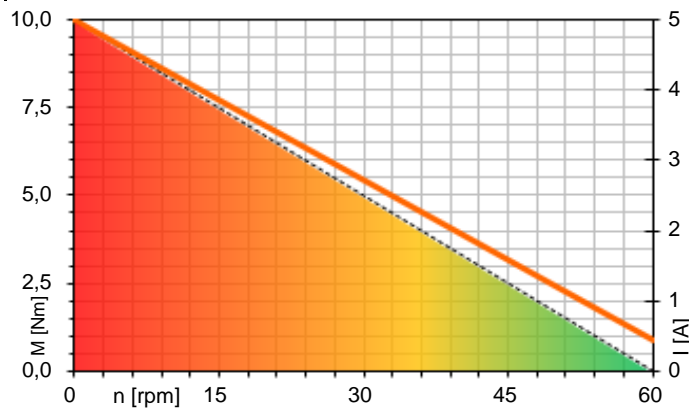
cable Ø: 9,5 mm / bending radius moved < 10 m travel distance: min. 10 x d

part number	outer jacket	type	cable length [m]	connector
MAT904106262-3 (shielded)	PVC	CF211	3	straight

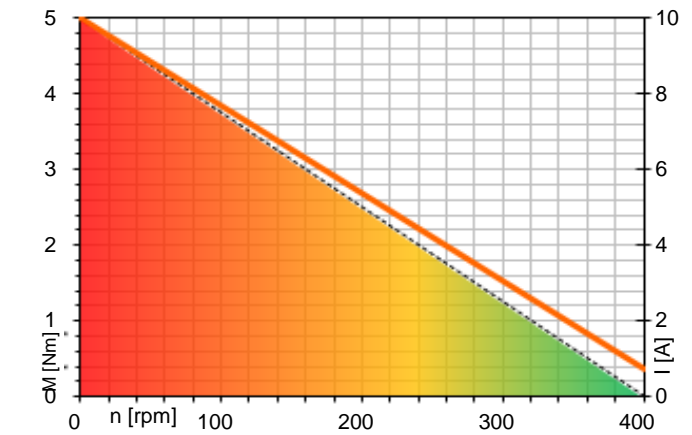
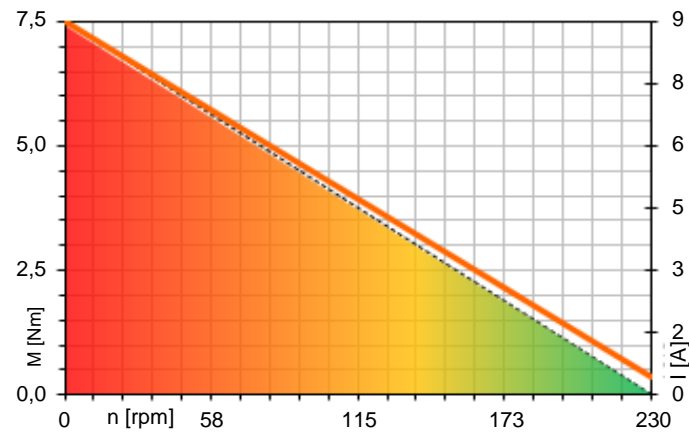
DC motor with worm gear



characteristic (24VDC)
 MOT-DC-42-J-H-B MOT-DC-42-J-H-D



MOT-DC-42-J-H-F MOT-DC-42-J-H-H



--- torque — motor current (red > overload / yellow > intermittent duty / green > nominal rating (S2))